



# DESIGN YOUR OWN FONT

Course **Visual Communication**  
Section: **Graphic Design**

## What to Do

Create your own unique typeface and then use a website to convert it to a font file. Think about how you want to use this font. Will it be appropriate to use in a Halloween Party flyer design? How about speech lettering for a comic book?

## Body or *Display Font*

Body fonts are typefaces designed for legibility. The font used for this text is Helvetica, a font that is very popular because of how modern it looks and how easy it is to read. Display fonts are designed to be creative and attention getting. Since they're used mostly for titles and headlines which use small amounts of text, legibility isn't as important for display fonts. Some display fonts are just symbols. These are called dingbat fonts.

## Serif or Sans Serif

Serifs are the decorations at the ends of lines on a letter. Sans Serif (like the one you are reading) don't have serifs.

## Important Terms

**Glyph:** Every character in a font is called a glyph. These include numbers, punctuation, and symbols.

**Baseline:** This is the invisible line that the letters sit on.

**x-height:** The height of a lowercase x. This is where the tops of most lowercase letters reach.

**Ascender:** The part of lowercase letters like "d" that rise above the x-height.

**Descender:** The part of lowercase letters like "q" that sink below the baseline.

## Instructions

### Option 1: Draw glyphs by hand

Print the grid on the next page. Use pencil to lightly draw your glyphs. Go back over them with ink. Once the ink is dry, carefully erase any remaining pencil marks.

Use a phone, tablet, or laptop camera to take a picture of the finished page.

### Option 2: Draw glyphs in a graphics app

Upload the grid to the app. You might need to take a picture of it and upload that if you can't import this PDF. Use the grid as a background layer to draw over.

### Pro Tip

Avoid using any color other than black. Your drawing should have sharp edges, no shading. Your art will be converted into vectors so that it can be used as type.

### Convert Your Art to a Font

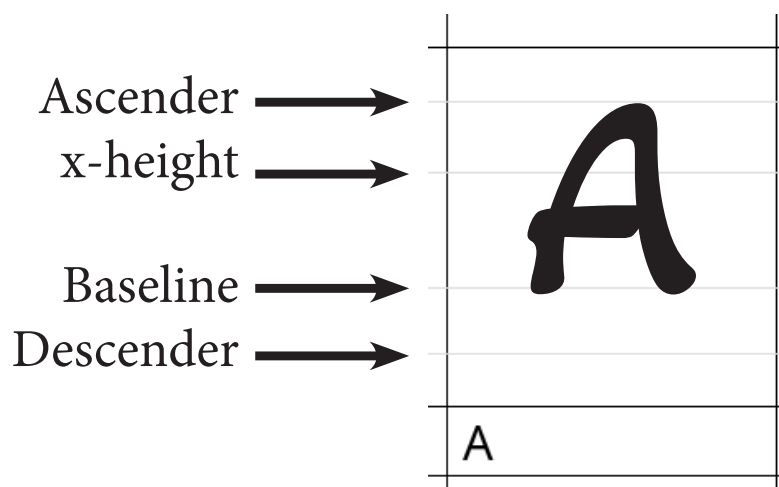
Once you have your font artwork finished, download an image or take a picture of your glyphs with the grid. Make sure the four square registration marks are in the image. The app will use these to straighten and square up the image before converting it.

Go to this website: [www.calligraphr.com/](http://www.calligraphr.com/)


Create a free account. With a free account, you are limited to how many glyphs your font can contain. Follow their instructions for uploading your art and converting it to a font you can download.

Your final font will be a ".ttf" file that can be installed on a computer. If you are on a school computer, talk to the teacher before trying to install your font.

### How to position your letters in the grid:





|   |   |   |   |   |   |   |   |
|---|---|---|---|---|---|---|---|
| ! | " | ' | , | . | : |  |   |
|   |   |   |   |   |   |   |   |
|   |   |   |   |   |   |   |   |
|   |   |   |   |   |   |   |   |
|   |   |   |   |   |   |   |   |
|   |   |   |   |   |   |   |   |
| ; | ? | A | B | C | D |   |   |
|   |   |   |   |   |   |   |   |
|   |   |   |   |   |   |   |   |
|   |   |   |   |   |   |   |   |
| E | F | G | H | I | J | K   | L |
|   |   |   |   |   |   |   |   |
|   |   |   |   |   |   |   |   |
|   |   |   |   |   |   |   |   |
|   |   |   |   |   |   |   |   |
| M | N | O | P | Q | R | S   | T |
|   |   |   |   |   |   |   |   |
|   |   |   |   |   |   |   |   |
|   |   |   |   |   |   |   |   |
|   |   |   |   |   |   |   |   |
| U | V | W | X | Y | Z | a   | b |
|   |   |   |   |   |   |   |   |
|   |   |   |   |   |   |   |   |
|   |   |   |   |   |   |   |   |
|   |   |   |   |   |   |   |   |
| c | d | e | f | g | h | i   | j |
|   |   |   |   |   |   |   |   |
|   |   |   |   |   |   |   |   |
|   |   |   |   |   |   |   |   |
|   |   |   |   |   |   |   |   |
| k | l | m | n | o | p | q   | r |
|   |   |   |   |   |   |   |   |
|   |   |   |   |   |   |   |   |
|   |   |   |   |   |   |   |   |
|   |   |   |   |   |   |   |   |
| s | t | u | v | w | x | y   | z |
|   |   |   |   |   |   |   |   |
|   |   |   |   |   |   |   |   |
|   |   |   |   |   |   |   |   |

